

# Hartz

CALL FOR  
MORE INFO

## The Lockwood



Plans and elevations are artist's conceptions.  
Refer to plans and specifications in the Sales Office for current details.

RANCH  
TOWNHOME

2 bed, 2 bath

~~\$370,000~~

\$360,900

## Luxury Features in This Home

1,459 Square Feet - One Level Living

Full Basement

2-Car Garage

Upgraded Kitchen Cabinets with Crown Molding

Granite Kitchen Counter Tops w/Stainless Steel Sink

Stainless Steel Appliances

Upgraded Bathroom Vanities Cabinets

Ceramic Floor Tile in Primary & Hall Bath

Luxury Vinyl Planking in the Kitchen, Dining Room and Foyer

Upgraded Carpet and Padding

1327 Balboa Court in Bolingbrook  
For More Information: 630.228.3415

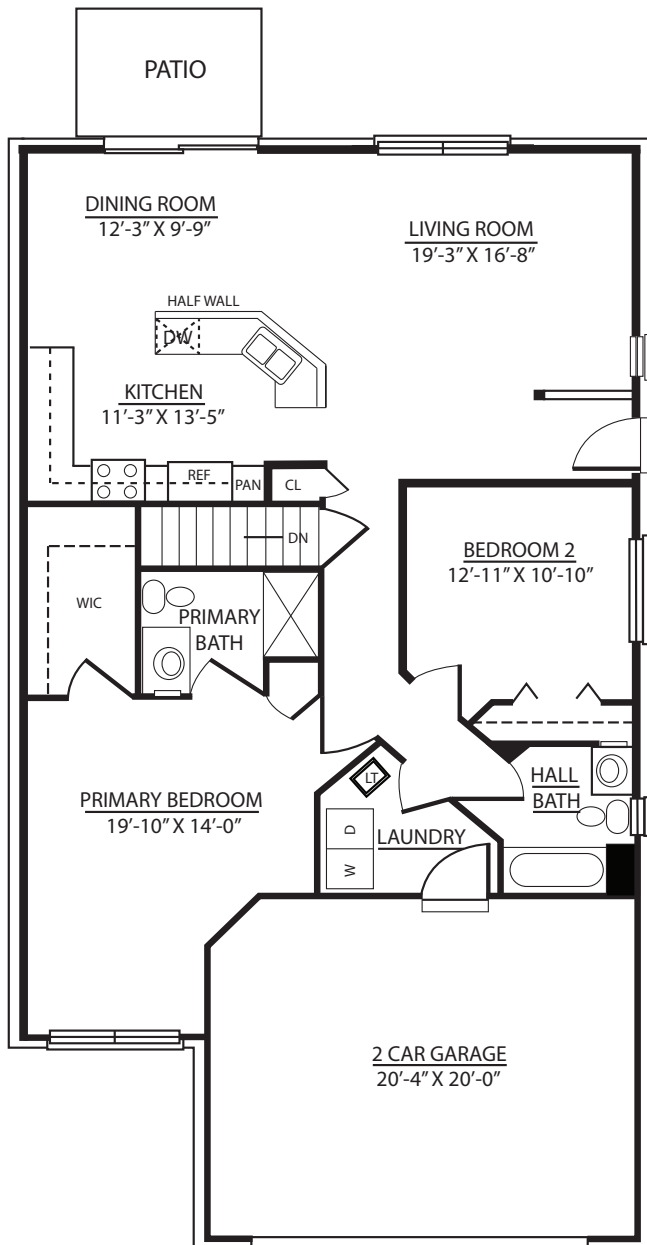


02/2023

# Hartz

**CALL FOR  
MORE INFO**

## *The Lockwood*



Hartz Construction Company's commitment to the highest standards of design and construction quality requires that specifications, equipment, illustrations, dimensions, and prices be subject to change without notice. Plans and elevations are artist's conceptions. Refer to plans and specifications in the Sales Office for current details.

*1327 Balboa Court in Bolingbrook*  
*For More Information: 630.228.3415*



02/2023