

Hartz

CALL FOR
MORE INFO

The Lockwood



Plans and elevations are artist's conceptions.
Refer to plans and specifications in the Sales Office for current details.

RANCH
TOWNHOME

2 bed, 2 bath

~~\$370,000~~

\$360,900

Luxury Features in This Home

1,459 Square Feet - One Level Living

Full Basement

2-Car Garage

Upgraded Kitchen Cabinets with Crown Molding

Granite Kitchen Counter Tops w/Stainless Steel Sink

Stainless Steel Appliances

Upgraded Bathroom Vanities Cabinets

Ceramic Floor Tile in Primary & Hall Bath

Upgraded Interior Door

Luxury Vinyl Planking in the Kitchen, Dining Room and Foyer

Upgraded Carpet and Padding

1315 Balboa Court in Bolingbrook
For More Information: 630.228.3415

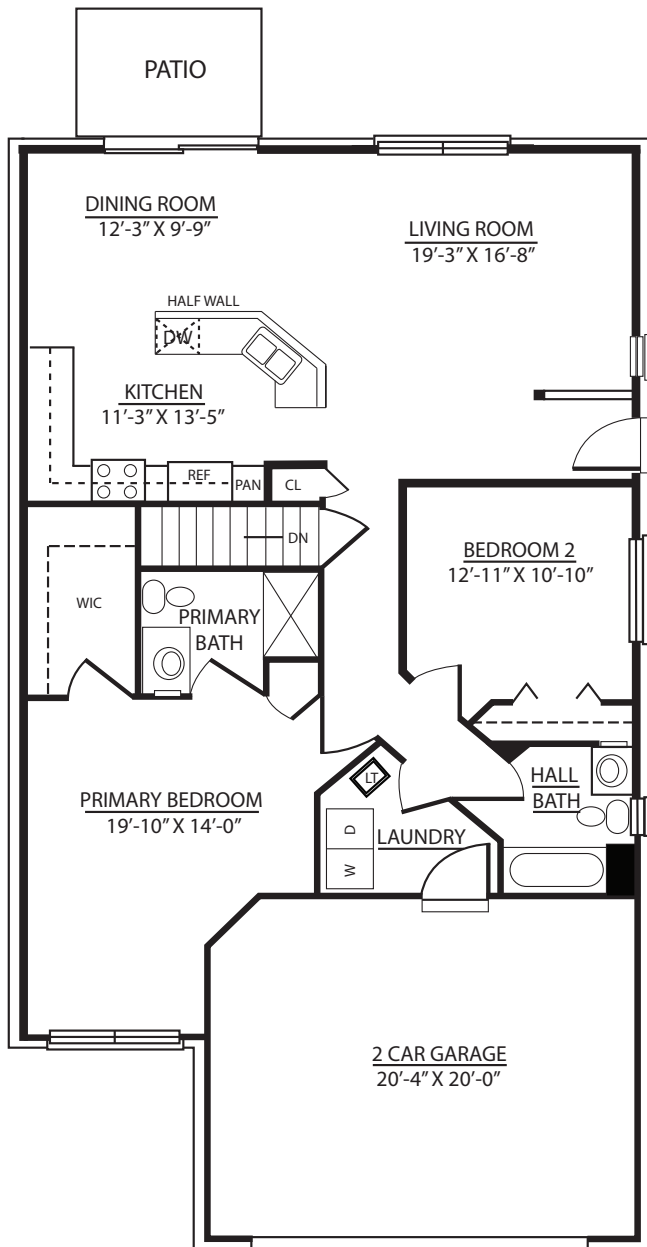


02/2023

Hartz

**CALL FOR
MORE INFO**

The Lockwood



Hartz Construction Company's commitment to the highest standards of design and construction quality requires that specifications, equipment, illustrations, dimensions, and prices be subject to change without notice. Plans and elevations are artist's conceptions. Refer to plans and specifications in the Sales Office for current details.

1315 Balboa Court in Bolingbrook
For More Information: 630.228.3415



02/2023