

# Hartz

**CALL FOR  
MORE INFO**

## *The Lily*



*SINGLE FAMILY  
HOME*

*4 bed, 2.5 bath  
\$370,900*

### Luxury Features in This Home

2,376 Square Feet

2nd Floor Laundry

9' Ceilings on First Floor

Full Basement

Huge Kitchen with Preparation Island

2-Car Garage

Primary Bath with Double Bowl Vanity

\*Furnishings & decorative items not included. Plans and elevations are artist's conceptions.  
Refer to plans and specifications in the Sales Office for current details.

*717 Garadice Drive in New Lenox  
For More Information: 815.462.1210*



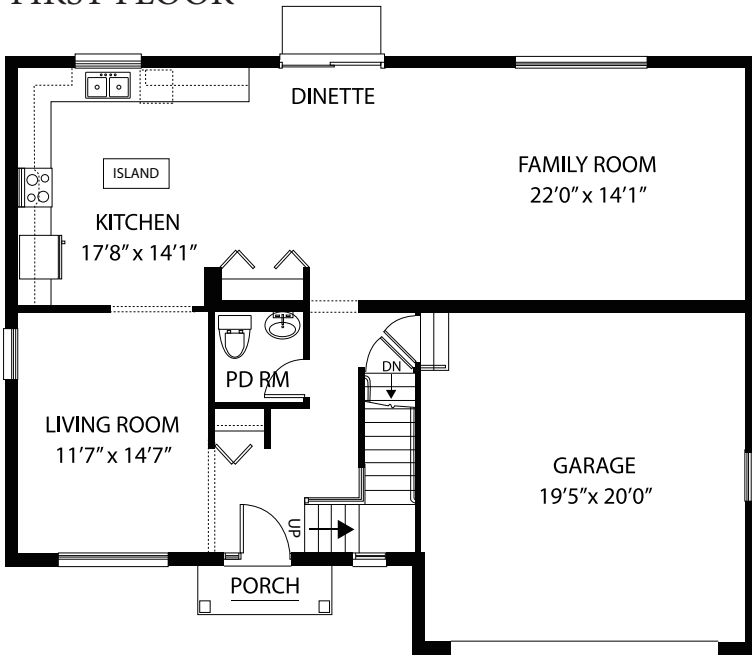
05/2021

# Hartz

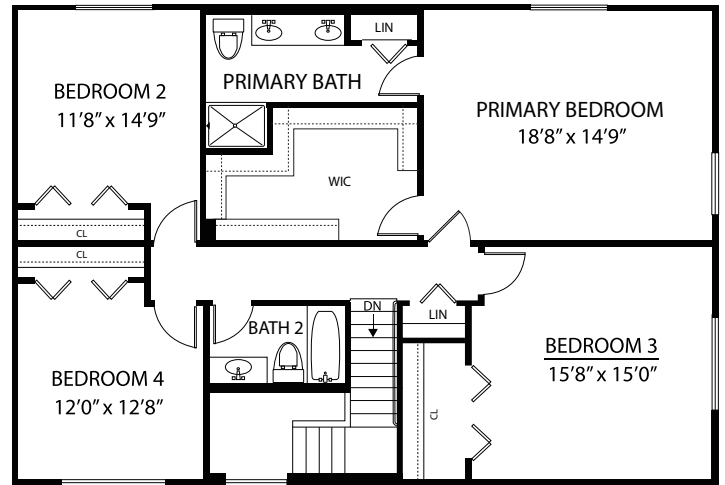
**CALL FOR  
MORE INFO**

## The Lily

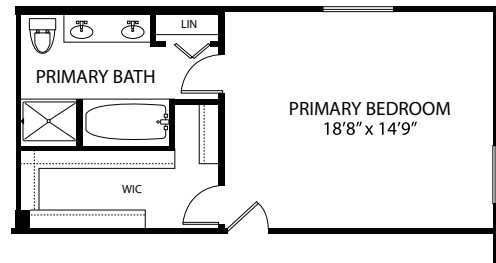
### FIRST FLOOR



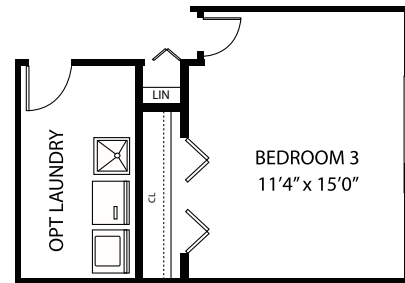
### SECOND FLOOR



### OPTIONAL PRIMARY BATH



### OPTIONAL LAUNDRY ROOM



Hartz Construction Company's commitment to the highest standards of design and construction quality requires that specifications, equipment, illustrations, dimensions, and prices be subject to change without notice. Plans and elevations are artist's conceptions. Refer to plans and specifications in the Sales Office for current details.

*717 Garadice Drive in New Lenox  
For More Information: 815.462.1210*



05/2021