

Kingsford

Two-story home with 4 bedrooms, 2-1/2 baths, partial basement with crawl space, second-floor laundry, and 2-car garage

PARK WEST in Manteno



Hartz Construction Company's commitment to the highest standards of design and construction quality requires that specifications, equipment, illustrations, dimensions, and prices be subject to change without notice. Plans and elevations are artist's conceptions. Refer to plans and specifications in the Sales Office for current details.



Information Center 815.907.5300
www.hartzhomes.com

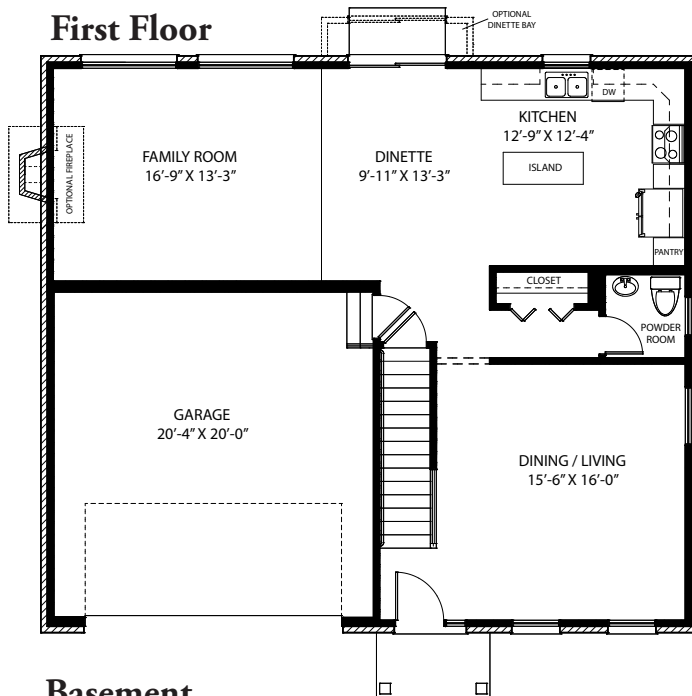


Kingsford

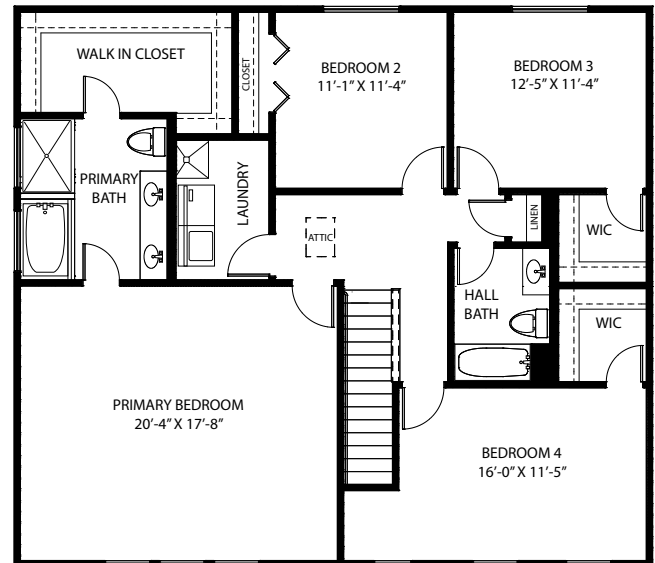
PARK WEST in Manteno

Two-story home with 4 bedrooms, 2-1/2 baths, partial basement with crawl space, second-floor laundry, and 2-car garage

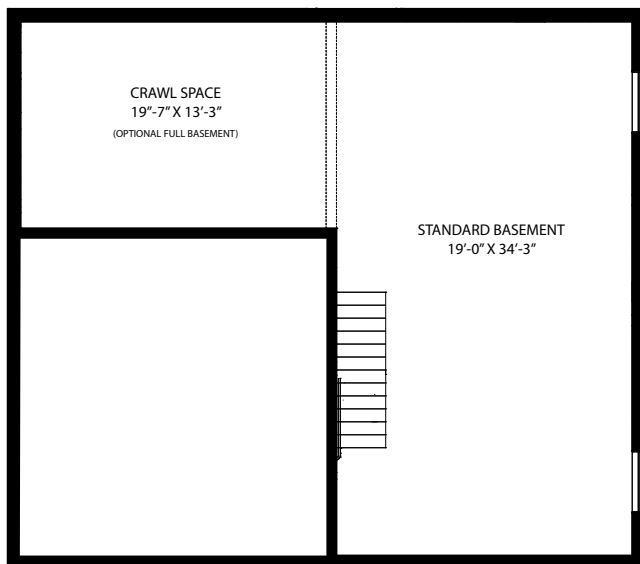
First Floor



Second Floor



Basement



Hartz Construction Company's commitment to the highest standards of design and construction quality requires that specifications, equipment, illustrations, dimensions, and prices be subject to change without notice. Plans and elevations are artist's conceptions. Refer to plans and specifications in the Sales Office for current details.



Information Center 815.907.5300
www.hartzhomes.com

