

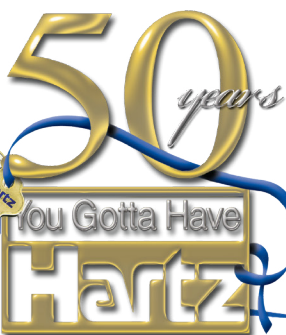
# Sapphire

## SKY HARBOR in New Lenox

*Two-story home with 4 bedrooms, 2-1/2 baths, loft,  
second floor laundry, partial basement w/ crawl, and 2-car garage*



Hartz Construction Company's commitment to the highest standards of design and construction quality requires that specifications, equipment, illustrations, dimensions, and prices be subject to change without notice. Plans and elevations are artist's conceptions. Refer to plans and specifications in the Sales Office for current details.



Information Center (815) 907-5302  
[www.hartzhomes.com](http://www.hartzhomes.com)

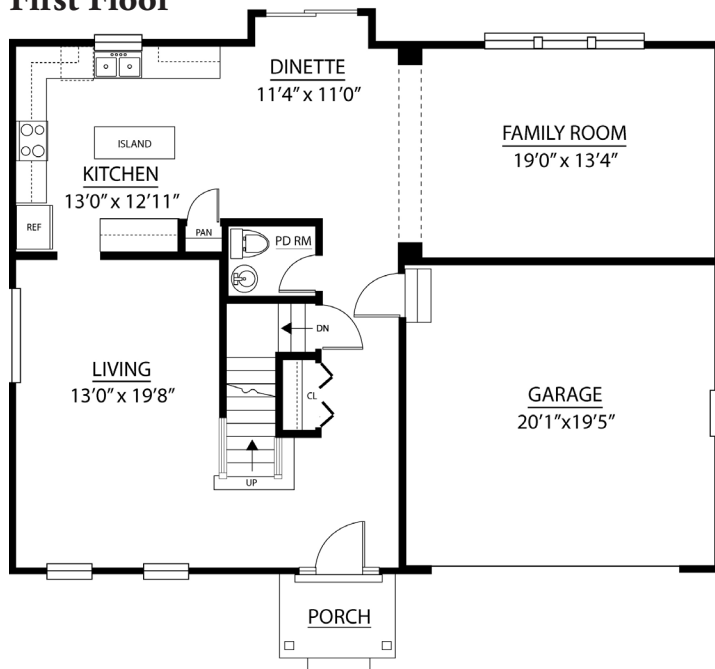


# Sapphire

## SKY HARBOR in New Lenox

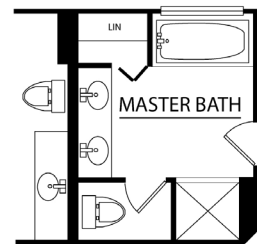
*Two-story home with 4 bedrooms, 2-1/2 baths, loft,  
second floor laundry, partial basement w/crawl, and 2-car garage*

### First Floor

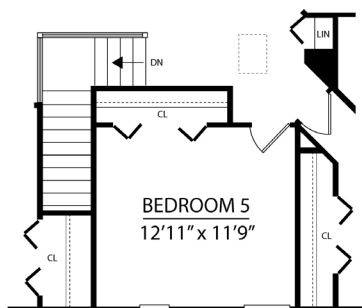


Hartz Construction Company's commitment to the highest standards of design and construction quality requires that specifications, equipment, illustrations, dimensions, and prices be subject to change without notice. Plans and elevations are artist's conceptions. Refer to plans and specifications in the Sales Office for current details.

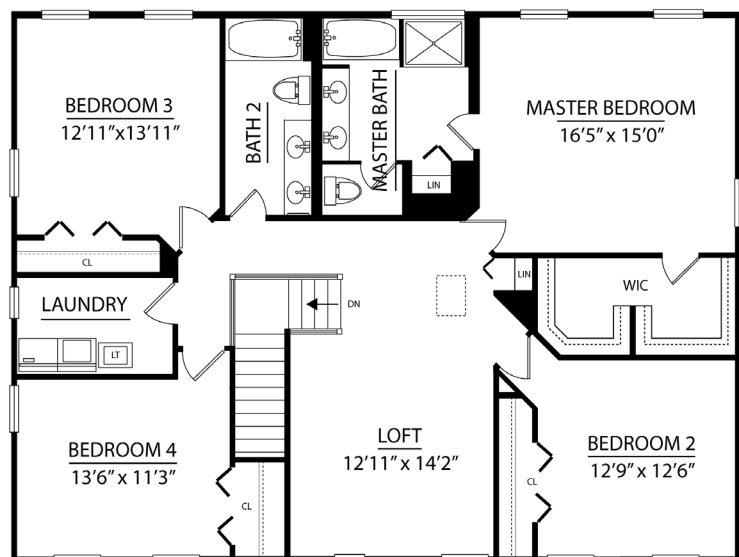
### Optional Deluxe Bath



### Optional 5th Bedroom



### Second Floor



Hartz Construction Company's commitment to the highest standards of design and construction quality requires that specifications, equipment, illustrations, dimensions, and prices be subject to change without notice. Plans and elevations are artist's conceptions. Refer to plans and specifications in the Sales Office for current details.



Information Center (815) 907-5302  
[www.hartzhomes.com](http://www.hartzhomes.com)

