

Lily

*Two-story home with four bedrooms, 2-1/2 baths,
partial basement with crawl, and 2-car garage*

MARQUIS POINTE in Montgomery



Elevation C



Elevation B



Elevation A

Hartz Construction Company's commitment to the highest standards of design and construction quality requires that specifications, equipment, illustrations, dimensions, and prices be subject to change without notice. Plans and elevations are artist's conceptions. Refer to plans and specifications in the Sales Office for current details.



Information Center (630) 228-3425
www.hartzhomes.com

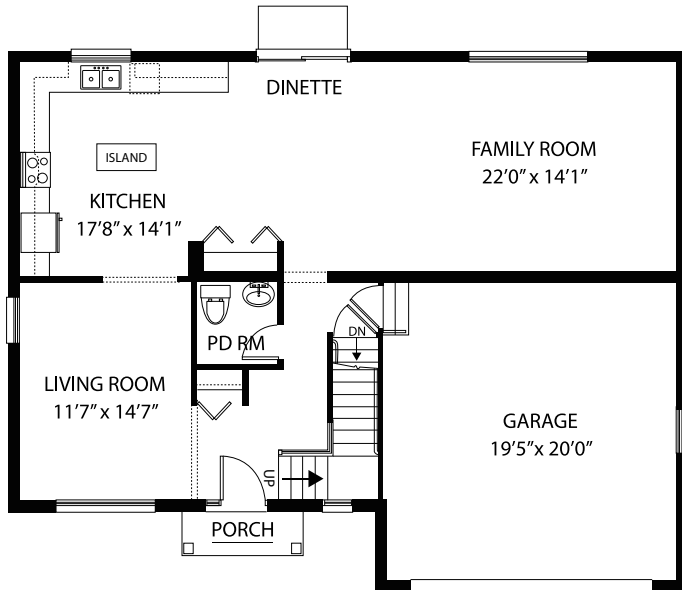


Lily

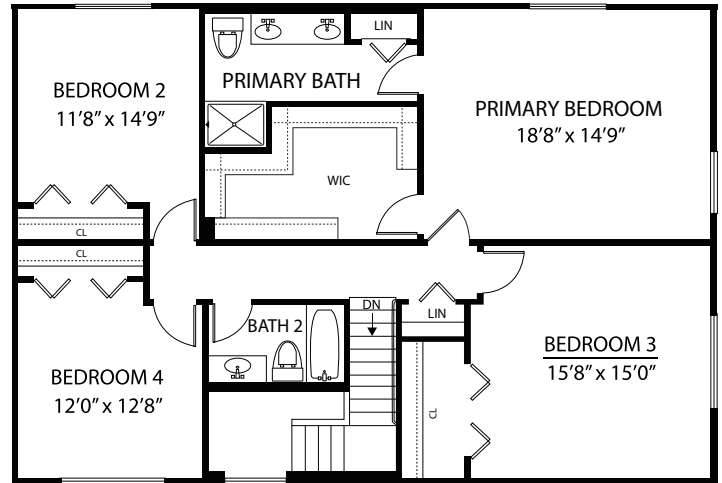
MARQUIS POINTE in Montgomery

*Two-story home with four bedrooms, 2-1/2 baths,
partial basement with crawl, and 2-car garage*

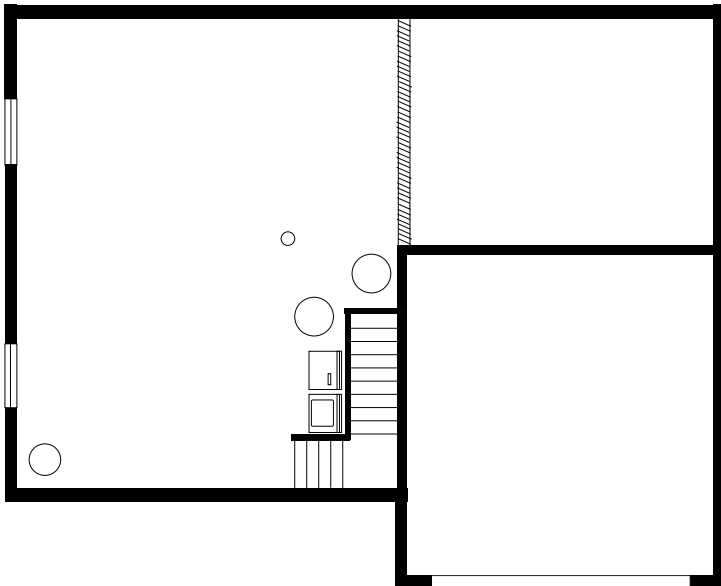
First Floor



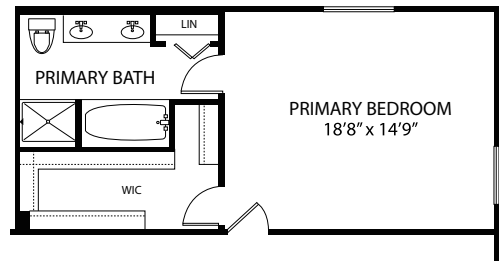
Second Floor



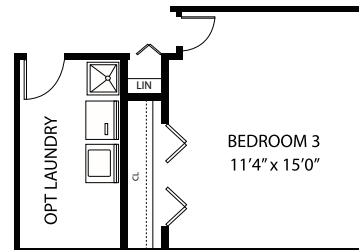
Basement



Optional Primary Bath



Optional Laundry



Hartz Construction Company's commitment to the highest standards of design and construction quality requires that specifications, equipment, illustrations, dimensions, and prices be subject to change without notice. Plans and elevations are artist's conceptions. Refer to plans and specifications in the Sales Office for current details.

Information Center (630) 228-3425
www.hartzhomes.com

