

# Sapphire

## LEIGH CREEK in New Lenox

*Two-story home with 4 bedrooms, 2-1/2 baths, loft,  
2-car garage, second floor laundry, and partial basement w/crawl*



Hartz Construction Company's commitment to the highest standards of design and construction quality requires that specifications, equipment, illustrations, dimensions, and prices be subject to change without notice. Plans and elevations are artist's conceptions. Refer to plans and specifications in the Sales Office for current details.



Information Center (815) 907-5303  
[www.hartzhomes.com](http://www.hartzhomes.com)

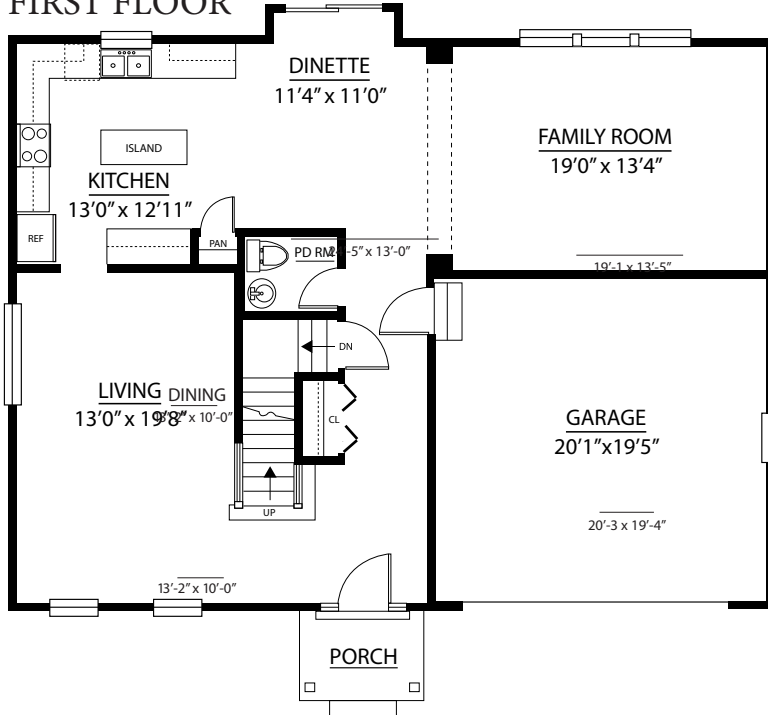


# Sapphire

## LEIGH CREEK in New Lenox

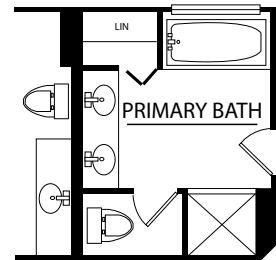
*Two-story home with 4 bedrooms, 2-1/2 baths, loft,  
2-car garage, second floor laundry, and partial basement w/crawl*

### FIRST FLOOR

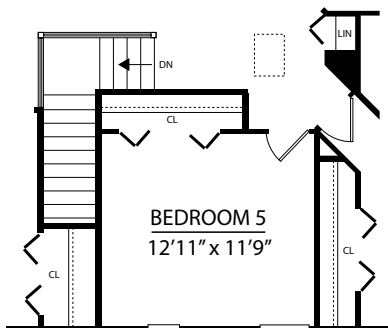


Hartz Construction Company's commitment to the highest standards of design and construction quality requires that specifications, equipment, illustrations, dimensions, and prices be subject to change without notice. Plans and elevations are artist's conceptions. Refer to plans and specifications in the Sales Office for current details.

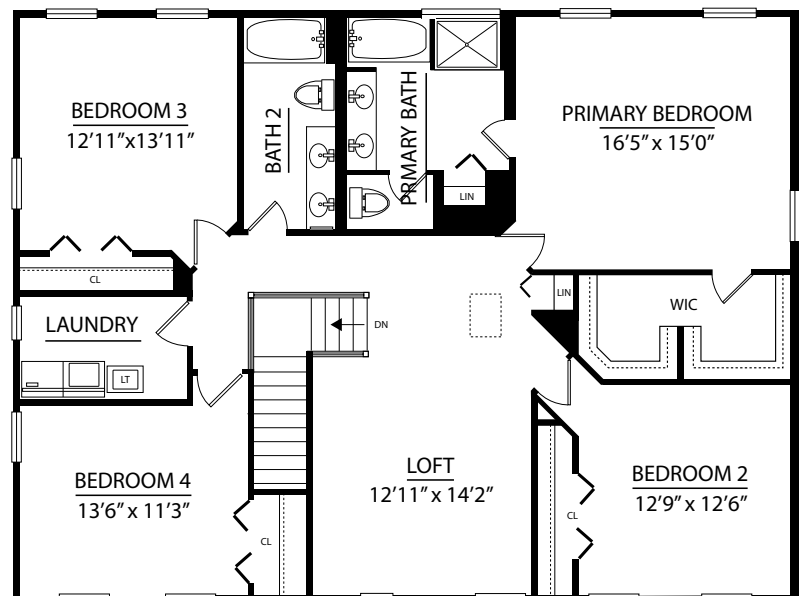
### OPTIONAL DELUXE BATH



### OPTIONAL 5TH BEDROOM



### SECOND FLOOR



Information Center (815) 907-5303  
[www.hartzhomes.com](http://www.hartzhomes.com)

