

Willow

WHISPER CREEK in Mokena

*Two-story home with 4 bedrooms, 2-1/2 baths, study,
second-floor laundry, 3-car garage, and full basement*



Elevation D



Elevation C



Elevation B



Elevation A

Hartz Construction Company's commitment to the highest standards of design and construction quality requires that specifications, equipment, illustrations, dimensions, and prices be subject to change without notice. Plans and elevations are artist's conceptions. Refer to plans and specifications in the Sales Office for current details.

50 years

You Gotta Have

Hartz

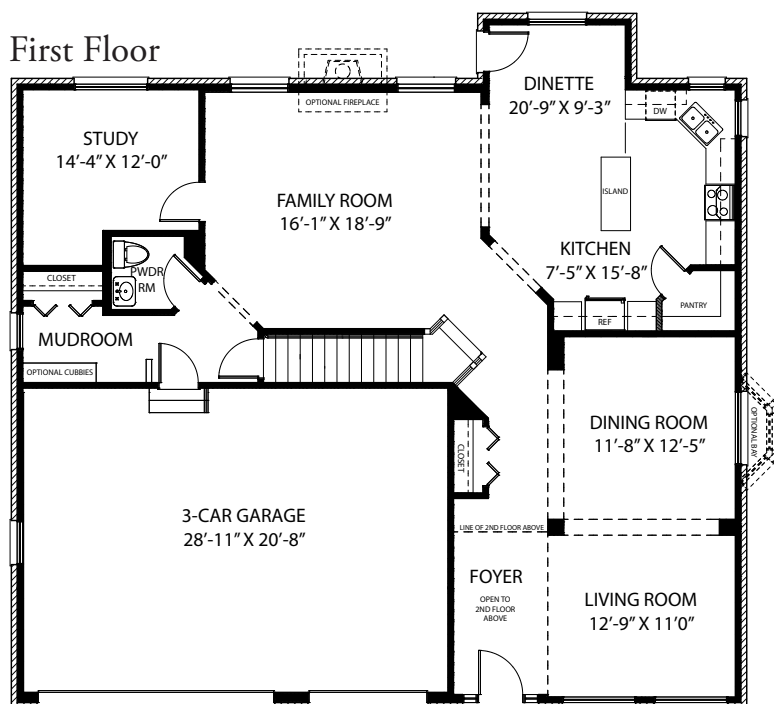
Information Center (708) 478-6914
www.hartzhomes.com



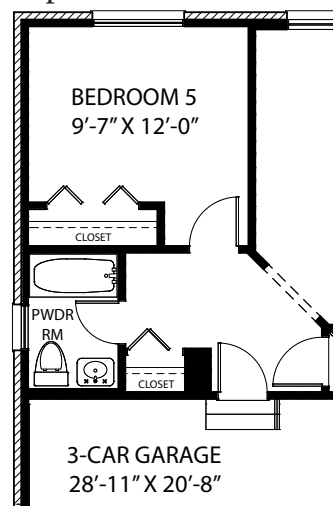
WHISPER CREEK in Mokena

Two-story home with 4 bedrooms, 2-1/2 baths, study, second-floor laundry, 3-car garage, and full basement

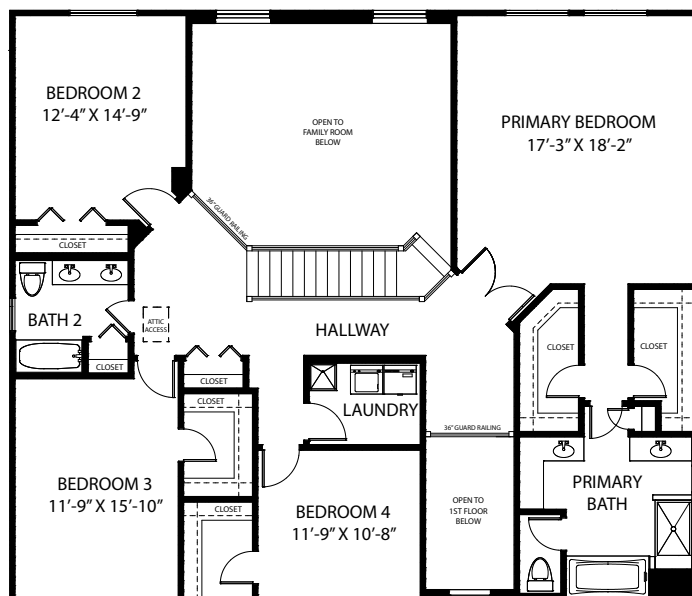
First Floor



Optional Bedroom 5



Second Floor



Hartz Construction Company's commitment to the highest standards of design and construction quality requires that specifications, equipment, illustrations, dimensions, and prices be subject to change without notice. Plans and elevations are artist's conceptions. Refer to plans and specifications in the Sales Office for current details.



Information Center (708) 478-6914
www.hartzhomes.com

