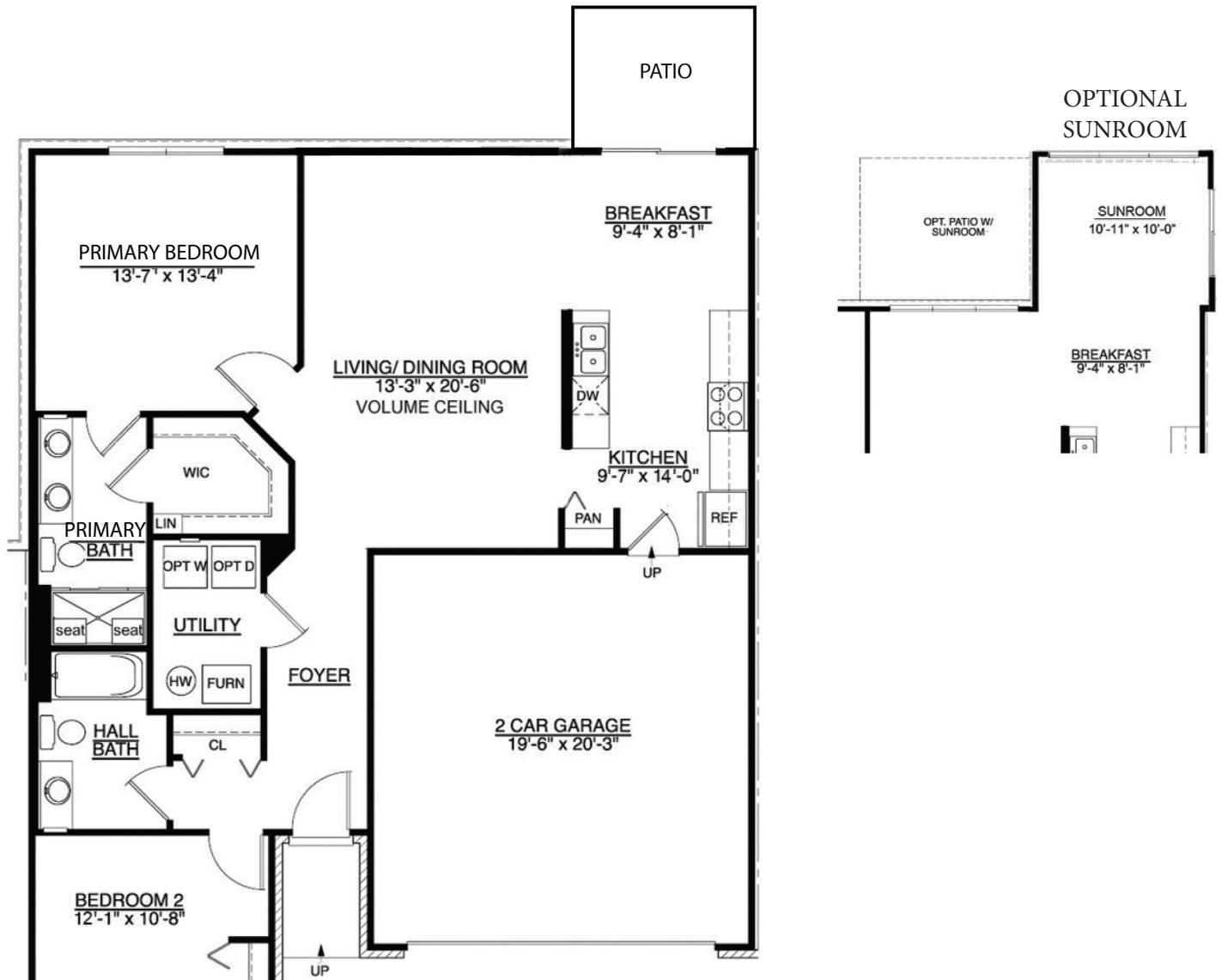


# Sanibel

*Townhome wth 2 bedrooms, 2 baths, 2-car garage*

*Playa Vista* IN PLAINFIELD  
Affordable Upscale Living



Hartz Construction Company's commitment to the highest standards of design and construction quality requires that specifications, equipment, illustrations, dimensions, and prices be subject to change without notice. Plans and elevations are artist's conceptions. Refer to plans and specifications in the Sales Office for current details.



Information Center (630) 228-3430  
[www.hartzhomes.com](http://www.hartzhomes.com)

