

# Elizabeth

*Playa Vista* IN PLAINFIELD  
Affordable Upscale Living

*Two-story home with four bedrooms, 2-1/2 baths, den, living room, dining room, full basement, 3-car garage*



Elevation C



Elevation B



Elevation A

Hartz Construction Company's commitment to the highest standards of design and construction quality requires that specifications, equipment, illustrations, dimensions, and prices be subject to change without notice. Plans and elevations are artist's conceptions. Refer to plans and specifications in the Sales Office for current details.



Information Center (630) 228-3430  
[www.hartzhomes.com](http://www.hartzhomes.com)

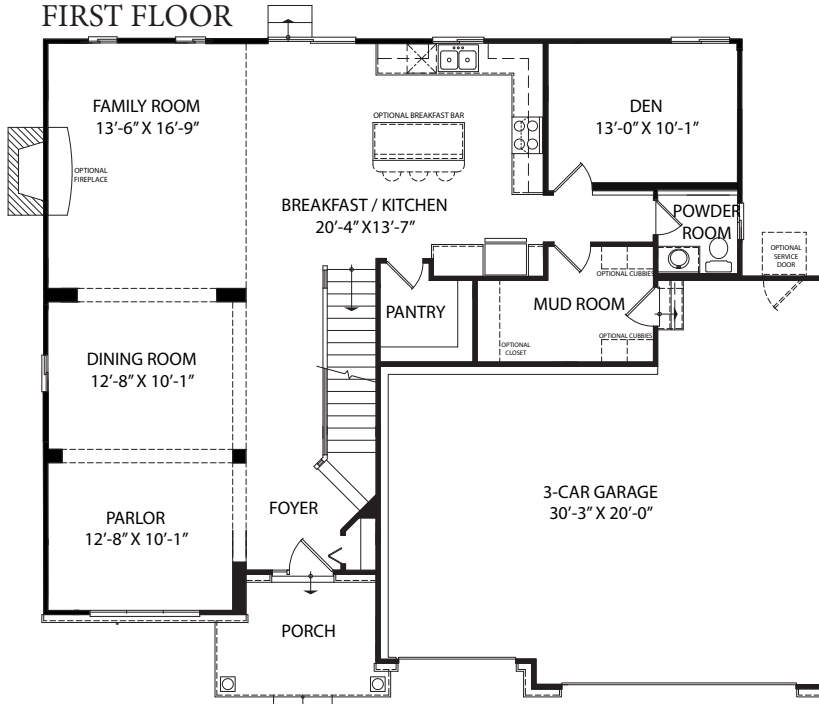


# Elizabeth

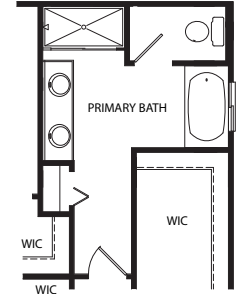
*Playa Vista* IN PLAINFIELD  
Affordable Upscale Living

*Two-story home with four bedrooms, 2-1/2 baths, den, living room, dining room, full basement, 3-car garage*

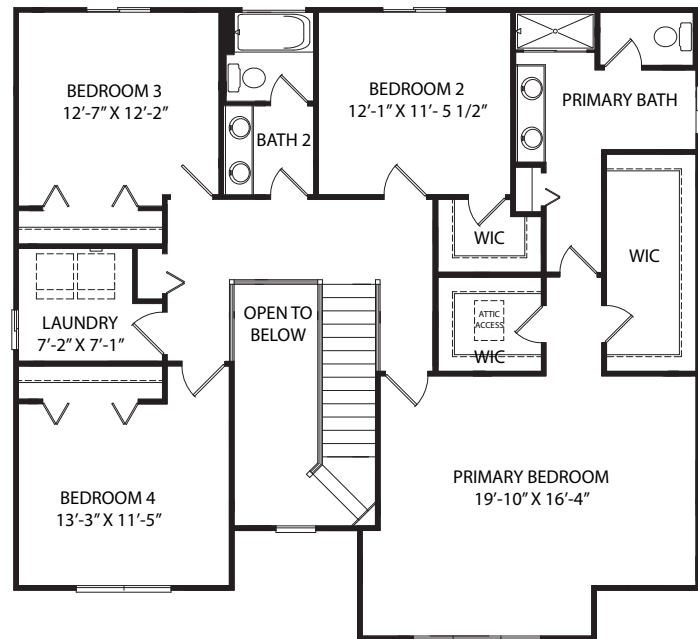
## FIRST FLOOR



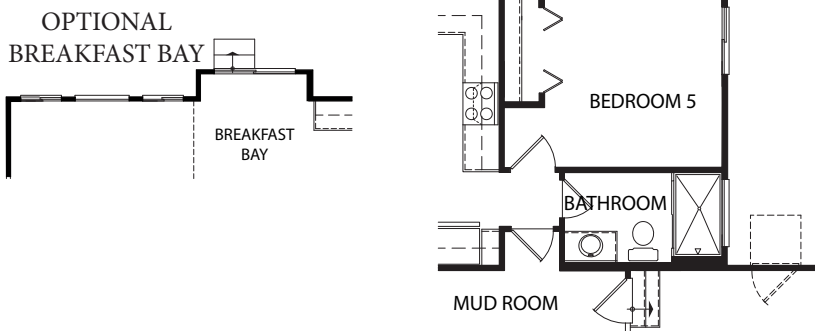
## OPTIONAL DELUXE PRIMARY BATH



## SECOND FLOOR



## OPTIONAL 5TH BEDROOM & BATHROOM



Hartz Construction Company's commitment to the highest standards of design and construction quality requires that specifications, equipment, illustrations, dimensions, and prices be subject to change without notice. Plans and elevations are artist's conceptions. Refer to plans and specifications in the Sales Office for current details.



Information Center (630) 228-3430  
[www.hartzhomes.com](http://www.hartzhomes.com)

