

# Home For Sale



*The Keswick*  
*Sanctuary Pointe Subdivision*

1087 Sanctuary Drive

Off Marley Rd. just north of Route 30 in New Lenox

Open Saturday 10-5 and Sunday 11-5 or by appointment

815-907-5301

Asking Price \$657,900

**No Reasonable Offer Will Be Refused**

This home includes the following luxury features:

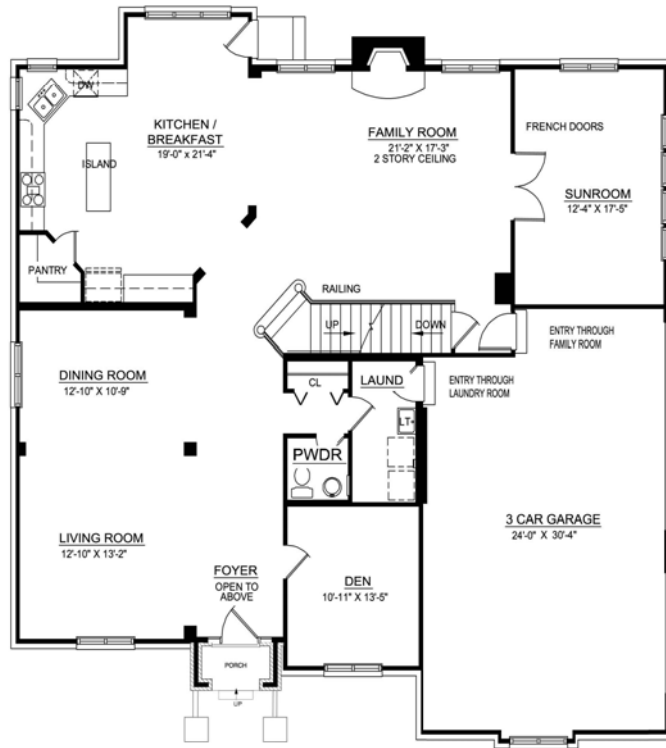
- 4 Bedrooms, 2.5 Baths
- 3,500 Square Feet
- Custom Gourmet Kitchen
- Full Basement
- Whirlpool Tub
- Stone Fireplace
- Stainless Steel Appliances
- Hardwood Floors
- 2-Story Family Room
- Complete Landscaping with Sprinkler System



## Xpress Delivery



## First Floor



## Second Floor



*Your Key To Living — It Starts With Hartz*