

Home For Sale



The picture represents a similar plan. The colors do not reflect this home.

The Arlington Model 201 W. Brush Hill Road, Unit #407

Essex Place Condominiums

(630) 279-8810

Asking Price \$389,900

No Reasonable Offer Will Be Refused!

This home includes the following luxury features:

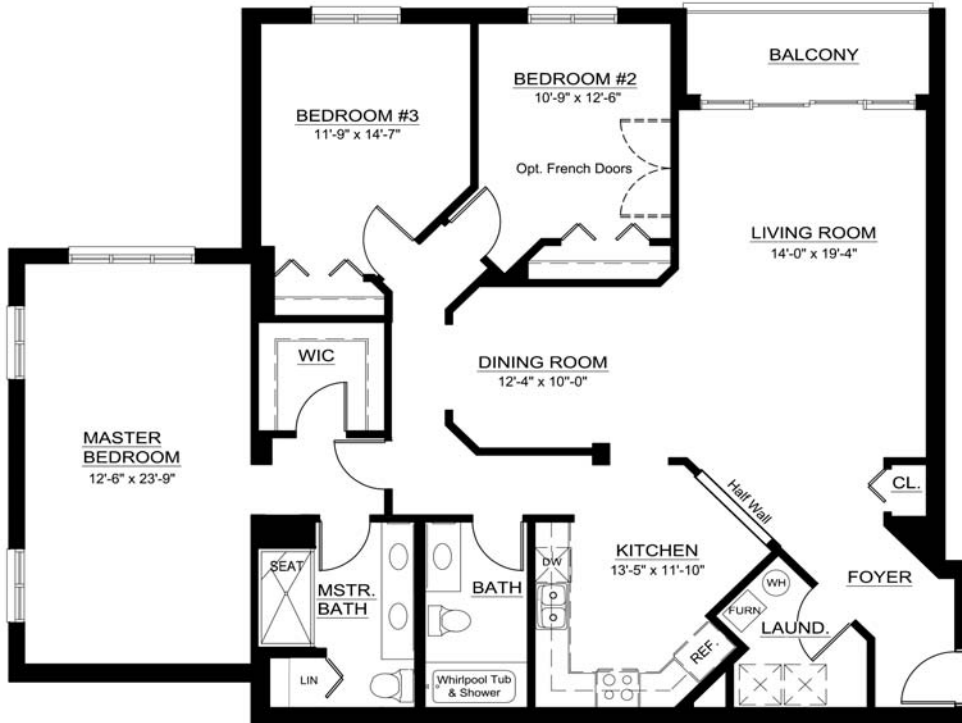
- 3 Bedrooms
- 2 Baths
- Wood Flooring
- Professionally Decorated w/ Paint Colors
- Raised Panel Oak Cabinets
- Upgraded Carpet and Padding
- Corian Kitchen Counter Tops
- Ceramic Tile in Kitchen and Baths

Xpress Delivery!!



Maintenance-Free Living Every Day!

ARLINGTON



Optional French Doors is not available in this home.

*ALL DIMENSIONS ARE APPROXIMATE. LAYOUT MAY BE MIRRORED BASED ON LOCATION.

Your Key To Living — It Starts With Hartz

